

Model Question of SSC Examination 2021 for All Board

Biology

Subject Code

1	3	8
---	---	---

Time — 2 hours 35 minutes

Creative Essay Type

Full marks — 50

[N.B. -The figures in the right margin indicate full marks. Read the stems attentively and answer any five of the following questions.]

1. ►

X Forms external and internal covering of organs
--

Y Gives shape and helps in locomotion

- a. What is Dyspepsia? 1
- b. What do you mean by Lacteal? 2
- c. Describe the Y tissue which is mentioned in the stem. 3
- d. Is there any type of the tissue of X? Discuss briefly. 4
2. ★ There is a pumping organ in our body which is responsible for the flow of the red colour fluid throughout the body.
- a. What is Hilus? 1
- b. Differentiate the Artery from Vein. 2
- c. Draw a labeled diagram of the organ which is mentioned in the stem. 3
- d. 'The fluid of the stem has many important functions' Explain it. 4
3. ► Tapan has no fever but he is suffering from suffocation. During breathing whizzing and whistling sound is produced. His lips also become bluish.
- a. What is Epiglottis? 1
- b. What is meant by Synovial bone joint? 2
- c. Describe the role of diaphragm and intercoastal muscle in the process of Tapan during which the whizzing sound is being produced. 3

d. Do you have any suggestion to Tapan for his cure? What are those? 4

4. ► Look at the figure and answer the following questions.

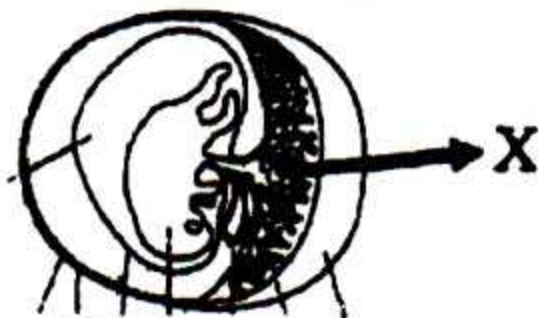


Figure: A



Figure: B

- a. What is Impulse? 1
- b. What do you mean by Epilepsy? 2
- c. Write down the symptoms of the disease caused by the entity of figure B. 3
- d. Is there any role of X in the development of embryo? Give arguments to your opinion. 4

5. ►

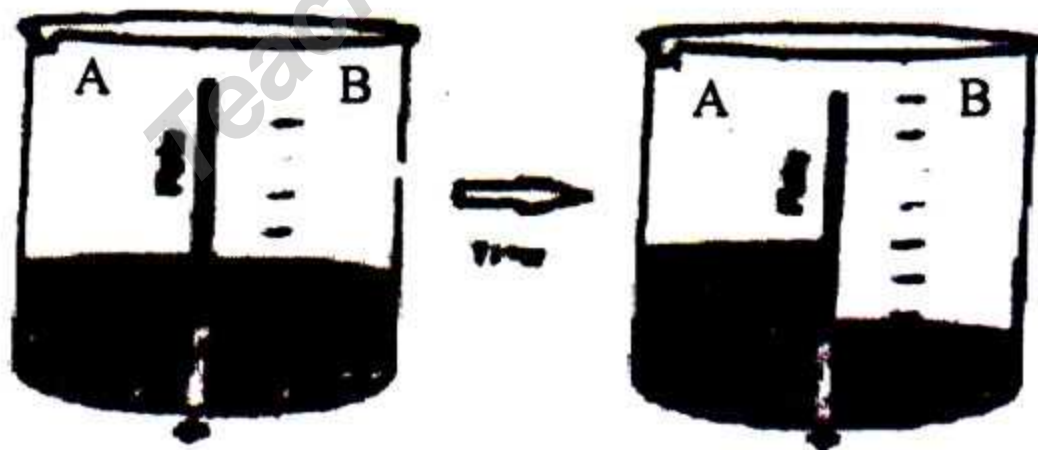


Fig-A

- a. What is active absorption? 1
- b. What you mean by lenticular transpiration? 2
- c. Process of figure 'A a special type of diffusion— discuss the reason. 3

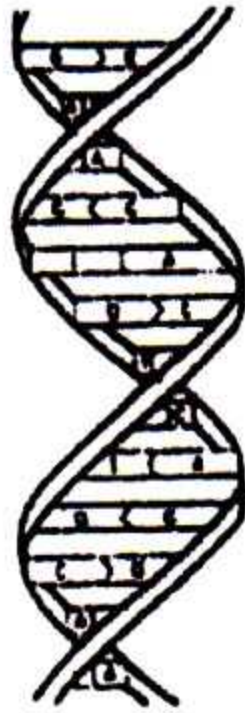
- d. Process of figure 'A' is very much important for plant—
Analyze it. 4

6. ★



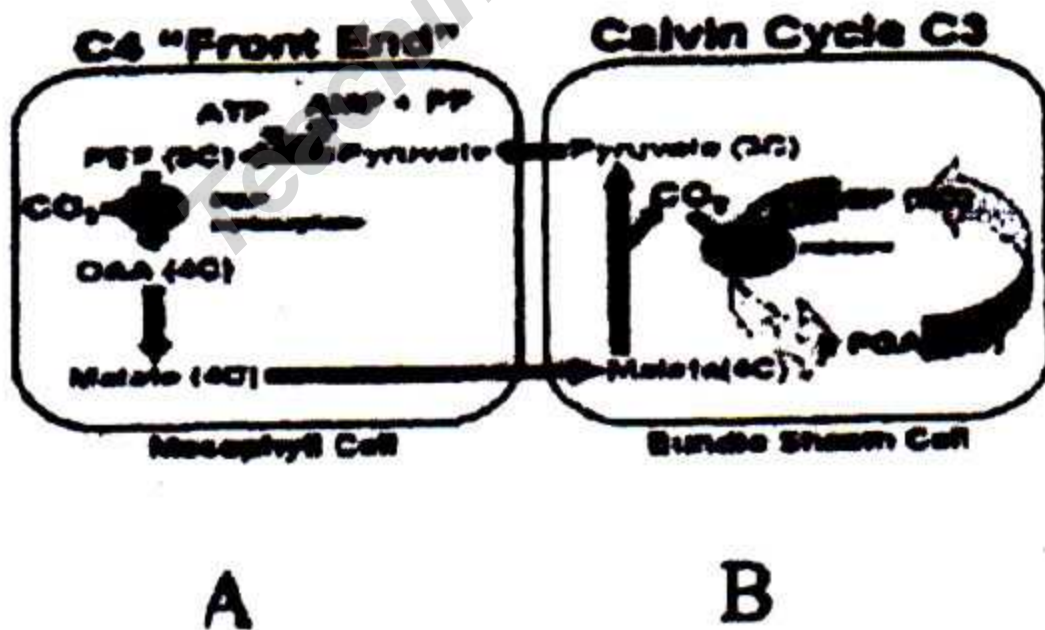
- a. What is physical components? 1
- b. What are differences between parasitic food chain and saprophytic food chain? 2
- c. Explain the relation of between tropic levels of above food pyramid. 3
- d. 'The flow of energy is always unidirectional'— Analyze it on the basis of above food chain. 4

7. ►



- a. What is transgenic? 1
 - b. What do you mean by tissue culture? 2
 - c. Describe the process of duplication of figure 'P'? 3
 - d. What are the roles of figure 'P' in genetic engineering? 4
- Analyze it. 4

8. ★



- a. What is Photophosphorylation? 1
- b. What is metacentric? 2
- c. Describe the part B of above figure. 3
- d. Analyze the significance of mentioned figure. 4

Time — 25 minutes

Creative Multiple Choice Questions

Full marks — 25

[NB. Answer all the questions. Each question carries one mark. Block fully, with a ball point pen, the circle of the letter that stands for the correct/best answer in the "Answer Sheet" for the Multiple Choice Questions Examination.]

- Which of the following is the Genus of Jute?
 - Oryza*
 - Mangifera*
 - Artrocarpus*
 - Corchorus*
- ★ Which branch of science discusses the relationship between organisms and their environment?
 - Genetics
 - Environmental science
 - Wildlife
 - Ecology
- The function of squamous epithelial tissue are—
 - Covering
 - Filtration
 - Secretion
 Which of the following is correct?
 - i & ii
 - i & iii
 - ii & iii
 - i, ii & iii
- Abu Huraira is 28 years old but he is very strong man. His weight is 70 kg and Height 165 cm. He plays every day in a week. His blood group is A(+ve).
 - 0.003
 - 25.71
 - 33.60
 - 42.42
- The man of which blood group can donate blood to Abu Huraira?
 - A
 - B
 - O
 Which of the following is correct?
 - i & ii
 - i & iii
 - ii & iii
 - i, ii & iii
- CO₂ is transported as NaHCO₃ by—
 - Blood plasma
 - RBC
 - WBC
 - Platelets
- ★ A normal adult man excretes almost — ml urine weekly.
 - 1500
 - 4500
 - 7500
 - 10500
- Joint of back bone is an example of which type of bone joint?
 - Fixed
 - Slightly movable
 - Freely movable
 - Ball & Socket
- How many pairs of Peripheral nerves are present in human body?
 - 12
 - 21
 - 31
 - 43
- The hormone of which gland regulates Calcium and Phosphorus metabolism?
 - Thyroid
 - Parathyroid
 - Adrenal
 - Islets of Langerhans
- Where does the fertilization occur?
 - Ovary
 - Uterus
 - Oviduct
 - Ureter
- percent of the AIDS patients are male.
 - 40
 - 50
 - 60
 - 70
- How many types of Goiter are present?
 - 2
 - 3
 - 4
 - 6
- What is the function of lysosome?
 - food producing
 - Energy production
 - germ protection
 - protein synthesis

15. ★ Which part of plant is used in tissue culture?

- i. Apical bud
- ii. Pollen grain
- iii. Green leaf

Which of the following is correct?

- (a) i & ii
- (b) i & iii
- (c) ii & iii
- (d) i, ii & iii

16. In which stage chromosome are located at the equatorial zone?

- (a) prophase
- (b) pro-metaphase
- (c) metaphase
- (d) anaphase

17. Which phytohormone is responsible for producing fruits?

- (a) gibberellin
- (b) cytokinin
- (c) auxin
- (d) ethylen

18. ★ In which wavelength photosynthesis, generally is carried out well?

- (a) 400-460nm
- (b) 400-480nm
- (c) 600-660nm
- (d) 600-680nm

19. After fertilization ovules are turned into—

- (a) seeds
- (b) endosperm
- (c) ovum
- (d) embryo

20. What is the percentage of carbon dioxide in water?

- (a) 0.03%
- (b) 0.3%
- (c) 0.003%
- (d) 3%

21. Which one is produce in anaerobic respiration?

- (a) glucose
- (b) CO₂
- (c) methyl alcohol
- (d) ethyl alcohol

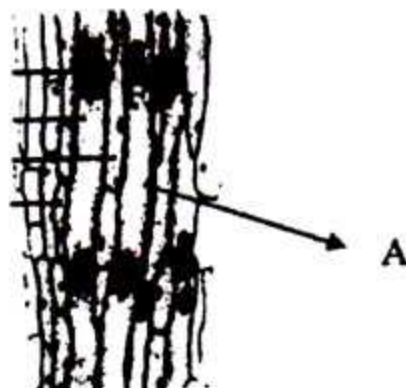


Figure : B

22. Which one helps A in conduction of food materials?

- (a) Sieve plate
- (b) Sieve pore
- (c) Companion cell
- (d) Trachid

23. The tissue mentioned in fig-B may be used in making—

- i. Rope
- ii. Sackcloth
- iii. Furniture

Which of the following is correct?

- (a) i & ii
- (b) i & iii
- (c) ii & iii
- (d) i, ii & iii

24. ★ Which one is the first cell of a sporophyte?

- (a) Embryo
- (b) Somatic cell
- (c) Zygote
- (d) Reproductive cell

25. Which one is day neutral plant?

- (a) Jhinga
- (b) Mango
- (c) Cucumber
- (d) Dahlia

Ans.	1	(d)	2	(d)	3	(d)	4	(b)	5	(b)	6	(a)	7	(a)	8	(b)	9	(a)	10	(b)	11	(a)	12	(c)	13	(a)
	14	(c)	15	(d)	16	(d)	17	(d)	18	(b)	19	(a)	20	(b)	21	(d)	22	(c)	23	(a)	24	(c)	25	(c)		